

The Effect of New Yogyakarta International Airport (NYIA) Development Against Development Infrastructure in Kulonprogo

Indreswari Suroso¹

¹ Aeronautical Studies Program, Sekolah Tinggi Teknologi Kediangantaraan Yogyakarta

Article History

Received : 19 October 2017

Accepted : 01 March 2018

Published : 01 April 2018

Abstract

The development of national transportation network includes land, sea and air transportation. This research aims to analyze the influence of new airport development in Kulonprogo named New Yogyakarta International Airport (NYIA) towards infrastructure development in Kulonprogo. The influence of NYIA on Kulonprogo infrastructure is massive, namely, the extension of national road to Kulonprogo Regency located in Milir Hamlet, Kedungsari Village, Pengasih Subdistrict, and bridge construction in Sentolo Subdistrict that connects between Bantul, Sleman and Kulonprogo districts. In addition to the construction of roads and bridges, the construction of infrastructure connects to Borobudur temple in Magelang regency under the term of Menoreh Surgery involving the land acquisition of Kulonprogo residents, investors and housing developers invest land in Kulonprogo to build hotel and housing near the new airport plan. The obstacles in the relocation of affected residents of this airport are the construction of public facilities and social facilities such as the availability of clean water, electricity network and household sanitation at the beginning of development that is important to support the basic needs. Public facilities and social facilities development are conducted by the Ministry of Public Works and Public Housing. The affected residents at Glagah Village, Palihan Temon Kulonprogo District refused to be relocated in case social facilities and public facilities are not available. The local government approach personally to the affected villagers by accelerating the relocation process and working with various stakeholders.

Keywords: *transportation, airport, local government, kulonprogo.*

Introduction

Kulonprogo is one of the regencies located in the west of DIY Province bordering on Purworejo Regency, Central Java. Kulonprogo suddenly became a highly reputable district after the Central Government chose this district to be the district to be built the largest International Airport in Indonesia and number three throughout ASEAN. Kulonprogo became

the target of investors to set up hotels, flight school colleges, even tourist areas. PT. Angkasa Pura I is mandated by the Government of Indonesia to socialize the design of the new airport in Kulonprogo named New Yogyakarta International Airport (NYIA). One of the development of national air transportation network is the establishment of international airport in Kulonprogo, the first stone laying of the construction of New Yogyakarta International Airport (NYIA) by the President of Indonesia Joko Widodo in Glagah village, Temon, Kulonprogo on Friday, 21 January 2017 as in Figure 1 The main obstacle faced in the construction of this new airport is the access road connecting to Kulonprogo Airport.

Correspondence: Indreswari Suroso
Aeronautical Studies Program, Sekolah Tinggi
Kediangantaraan, Yogyakarta
E-mail: indreswari.suroso@gmail.com

Assistant Deputy of Infrastructure for Connectivity and Logistic System of Coordinating Ministry for the Ministry of Marine Affairs Rusli Rahim explained that coordination activities of Kulonprogo airport development are land procurement, planning and construction such as design details, fencing, airside, terminal, tower, supporting building and supporting infrastructure. In addition, the coordination of the Extra High Voltage Air Channel (SUTET) related to security and flight procedures, accessibility with the construction of the airport railway and access roads or tolls, tsunami-related risk mitigation, and Daendels road as in Figure 17, with the removal of roads airport land. Related to the potential impact of the tsunami on Kulonprogo Airport, the results of the study concluded that the tsunami event could cause water levels to reach the coast near the airport. The BMKG is still conducting further studies and will deliver the results.

Figure 1. The laying of the first stone of new airport candidate in Kulonprogo by the President of RI Joko Widodo.



Problem

- How will the new airport affect the development infrastructure in Kulonprogo?
- How synergy between PT. Angkasa Pura I, Local Government Kulonprogo and villagers affected?
- What are the constraints in relocating residents affected by new airport candidates in Kulonprogo?

Purposes

- Know the influence of new airport to development infrastructure in Kulonprogo.
- Knowing the synergy between PT. Angkasa Pura I, Kulonprogo Local Government and villagers affected.
- Knowing the obstacles in the relocation

of residents affected by new airport candidates in Kulonprogo.

Theory

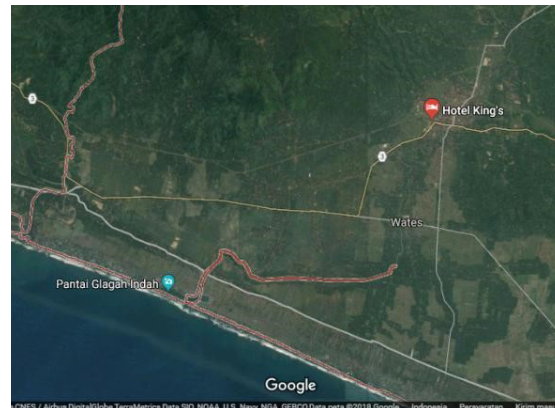
The construction of Kulonprogo airport candidate has pros and cons, until now in the process of implementation there is still rejection from the people affected by the direct airport, some of whom work as farmers refuse because their livelihood will disappear, but over time, the affected citizens become agreed the new airport due to the new airport will bring a positive impact for the people around the economic field, many hotels, malls and inns will also be very beneficial for affected residents such as Figure 2. New Airport candidate area of New International Yogyakarta Airport in Kulonprogo (Sabandar, 2014).

The Coordinating Ministry for the Ministry of Marine Affairs continues to monitor the development of Kulonprogo Airport, Yogyakarta Special Region. This administrative process is almost complete. Constraints to Kulonprogo Airport development such as land acquisition, construction, residential relocation, construction of public facilities and social facilities such as the availability of clean water, electricity network and household sanitation at the beginning of development are essential to support the needs of everyday citizens.

Meanwhile, 58% of land or 340 ha has been paid to affected people, while 6% of the land or about 35 hectares of land belonging to government agencies in the form of public facilities and social facilities are still in the process of payment. The remaining 9% is a resident land that rejects and is still in an inheritance dispute that is also processed through a waiver replacement at the Wates District Court. Related land owned by government agencies for public facilities and social facilities covering 6%, is currently in the settlement between Kulon Progo Local Government, Yogyakarta Province Special Region Government (DIY), and National Land Agency (BPN) DIY Regional Office which is planned to be completed before implementation the inauguration of New Yogyakarta International Airport by President Joko Widodo. (Kemenhub, 2017).

One example of universities that agree with the establishment of a new airport in Kulonprogo

Figure 2. New Airport candidate area of New International Yogyakarta Airport in Kulonprogo



is STTKD Yogyakarta. STTKD Yogyakarta which has cooperated with Kulonprogo Local Government by giving the scholarship to 20 students affected by the airport in Kulonprogo get NON-PNS scholarship to study at STTKD Yogyakarta in D1 Ground Handling Study Program. Participants received through a series of selection stages of 182 Applicants, screened to 40 and screened to 20 participants. Here is the Picture 3. Photo Sharing of the Handover Event 20 Scholars of Kulonprogo Local Government Scholarship between Kulonprogo Regent D H. Hasto Wardoyo, Sp. (OG), Chairman of STTKD Marsda TNI Purn Udin Kurniadi S.E, M.M, and Kadinaskertrans Kulonprogo Eko Wisnu Wardhana, S.E. (Disnakertrans, 2017)

for Kulonprogo residents who are willing to leave his village for this airport. Gate will be proposed with Gate Glagah name, Gate Anchors, Gate Palihan, Gate Kebon Rejo, and Gate Sindutan.

Through the Corporate Social Responsibility (CSR) program, PT Angkasa Pura I (Persero) provides security unit training to residents affected by the New Yogyakarta International Airport (NYIA) airport at Dharmais Foundation Complex, Pengasih, Thursday (13/07/2017) Picture 4. The opening of the training was attended by Wabup Drs H. Sutedjo, Kulon Progo,

Some cooperation with Kulonprogo Local Government with PT. Angkasa Pura 1 is recruitment of security scholarship provided that the participants are villagers affected by the airport to be trained to be security. Along with the local identity, five affected villages which become the location of the airport will be the gate name in the terminal. Angkasa Pura I chairman convey this is a form of appreciation

Kulon Progo, Kulon Progo Police, AKP Sumina, SH, Head of Manpower and Transmigration Office Eko Wisnu Wardana, SE, other trainees and invitees. Marked by the guarding of the security guard cap by Vice Regent Kulonprogo, General Manager of Angkasa Pura I and Kulon Progo Police Sub-precinct At least 45 people from 5 villages affected the airport following the training of the security guard PT Angkasa Pura I General Manager Agus Pandu Purnama.

Figure 3. Opening training of security guard PT. Angkasa Pura 1 was attended by Vice Regent Drs. H. Sutedjo, Member of Parliament Kulon Progo, Tuban Police Map Kulon Progo AKP. Sumina, SH, Head of Department of Manpower and Transmigration Eko Wisnu Wardana, SE

Figure 4. Photo Sharing of the Handover Event of Kulonprogo Local Government Scholarship Recipient between Kulonprogo Regent dr. H. Hasto Wardoyo, Sp. (OG), Chairman of STTKD Marsda TNI Purn Udin Kurniadi S.E, M.M, and Kadinaskertrans Kulonprogo Eko Wisnu Wardhana, S.E.



mentioned that training the residents are free of charge free of charge In the implementation, PT Angkasa Pura I in cooperation with the business services security services from Kulon Progo namely PT Tri Dhaya Prima Karya. (Sorot Kulonprogo, 2017)

The local government of Kulonprogo continues to support the construction of the new airport in Kulonprogo. Public perception indicates that 76% of respondents have positive perceptions of airport development plan, zone 1 and zone 2 have high interest compared to zone 3 in making new business. Kulonprogo community on the affected residents of the new airport has an interest in the type of business stalls, grocery stores and government to accommodate the needs of society in the framework of business development. (Afwan, 2016)

Angkasa Pura 1 Strategy in facing community resistance to international airport development plan in Kulonprogo as follows: 1) socialization with public figures and public citizens; 2) invite the mass media to comparative studies of the development of new airports in West Sumatra; 3) conduct talk shows on television and develop CSR (Corporate Social Responsibility) program (Yunita, 2016)

In 2014, the socialization of the New Town International Airports mapping plan mapped the community development program for residents of Temon Sub-district, Kulonprogo Regency, which are particularly vulnerable. There are three recommendations: the need for a grand design of airport development that considers the sustainability of vulnerable groups, the initiation of community development programs to empower vulnerable groups, the need for affirmative policy formulation for vulnerable groups based on the principle of social justice (Wahyu, 2014)

Kulonprogo Regency has the construction of mega projects such as the construction of an international airport, the development of a fishing port, iron sand mining and steel industry area. The existence of infrastructure development policy is expected to increase the economic growth of the people. Economic development in the form of infrastructure will bring positive and negative impacts. The positive impact is rapid economic growth. The negative impact is the development of infrastructure will cause the occurrence of modernity in the public sphere

because there is no policy to protect the natives Kulonprogo. (Insan, 2017).

Wahana Tri Tunggal is a group of people who reject the new airport in Kulonprogo, in this research there is a process of identifying threatening acts, the form of rejection is the acceptance of citizens established a new airport due to use of farmland citizens. (Naimul, 2015)

The development plan is in Kulonprogo Regency. The new airport is expected to have a positive impact on the development of Kulonprogo Regency, due to the carrying capacity of the road network (national / regency/city) network, especially the south-south road development, the existence of railway transportation network. Moreover, the development of Special Economic Zone in Kulonprogo will also provide a feed-back to the increasing growth of the region in Kulonprogo. (Bappeda, 2017)

Research Method

This research was conducted in relocation area of the affected villages of new airport candidate on May 5, 2017, until May 25, 2017, especially in Glagah Village, Temon Subdistrict, Kulonprogo Regency. This research method as follows:

1. Direct observation of affected people.
2. The approach of personnel and interviews to citizens impacted prospective new airport in Kulonprogo.
3. Conducting interviews with local government officials Kulonprogo.
4. Conduct a relocation survey of affected villagers.
5. Collecting secondary data from various literature both mass media and journal search.
6. To socialize the aviation world of the readiness to face new airport candidates in Kulonprogo to Wates Village residents and affected villagers.

Result and Discussion

Residents affected by the construction of a new airport in Temon Sub-district Kulonprogo District started building houses for affected people in relocation land location in early March 2017. The land degradation of land relocation and construction was carried out since February

2017. According to data from the Head of Cipta Karya Department of Public Works that the Kulonprogo Regional Government has budgeted Rp. 19.000.000.000, - for the degradation of the villages Palihan, Glagah, Kebonrejo, Jangkar and Janten. Extensive land relocation in Glagah 58 Ha, Palihan 58 Ha, Kebonrejo 1.4 Ha, Janten 1 Ha and Anchors 1.8 Ha. Type of house offered there are three namely

- a. Type 45 for Rp. 200.000.000, - up to Rp.250.000.000, -
- b. Type 65 for Rp. 300,000,000, - up to Rp.350.000.000, -
- c. Type 100 for Rp. 500,000,000, - up to Rp.600.000.000, -

Figure 5. Housing Relocation Type 65 residents affected by Kulonprogo new airport



Figure 6. Relocation of affected residents in Kulonprogo under construction



Figure 7. Housing Relocation Type 45 residents affected by Kulonprogo new airport



There are 46 families who enrol in the magersari land area of 1.5ha in Girigondo Village, Kaligintung, Temon Kulonprogo. Kulonprogo District Government proposes 100 units of affected residents of the airport has been approved by the Ministry of Public Works and Public Housing. The following is a picture of housing relocation for residents affected by the new airport in Kulonprogo. Figure 5. Housing Relocation Type 65 residents affected by Kulonprogo new airport, Figure 6. Relocation of affected residents in Kulonprogo under construction, Figure 7. Housing Relocation Type 45 residents affected by Kulonprogo new airport Figure 8. Resident housing affected in Glagah Village, Temon Sub-district, Kulonprogo District and Figure 9. Housing Relocation Type 100 residents affected by Kulonprogo new airport.

One example of concern Kulonprogo Local Government against residents affected one of the provisions of Ground Handling education scholarship to residents Kulonprogo in High School of Aerospace Technology Yogyakarta to be prepared to become human resources in the field of flight at Kulonprogo airport. STTKD Yogyakarta which has cooperated with Kulonprogo Local Government by giving the scholarship to 20 students affected by the

Figure 8. Resident housing affected in Glagah Village, Temon Sub-district, Kulonprogo District



Figure 9. Housing Relocation Type 100 residents affected by Kulonprogo new airport



airport in Kulonprogo get the NON-PNS scholarship to follow education at STTKD Yogyakarta in D1 Ground Handling Study Program as shown in Figure 10. Coverage of

Figure 10. Greeting Chairman of STTKD Yogyakarta and Regent Kulonprogo in the handover ceremony scholarship recipient government of Kulonprogo Ground Handling Studies Program



Figure 11. Masterplan of New Airport Candidate when the plane takes off at Kulonprogo



Figure 12. Apron New Airport Candidate in Kulonprogo



new cadets of scholarship recipients Kulonprogo Local Government Ground Study Program Handling. Picture 10. Speech of Kulonprogo Regent in the handover ceremony of Kulonprogo Government scholarship grant Program Ground Handling Study. Speech of the Chairman of STTKD Yogyakarta in the handover ceremony of Kulonprogo Government scholarship grant Program Ground Handling Study.

New Yogyakarta International Airport (NYIA), located in Kulon Progo Regency, Special Province of Yogyakarta will begin construction soon. As for the picture masterplan as in Figure 11 and 12.

The Local Government of Kulonprogo has a Regional Spatial Plan as shown in Figure 13.

Figure 13. Caption Picture of Spatial Plan of Kulonprogo Local Government Area

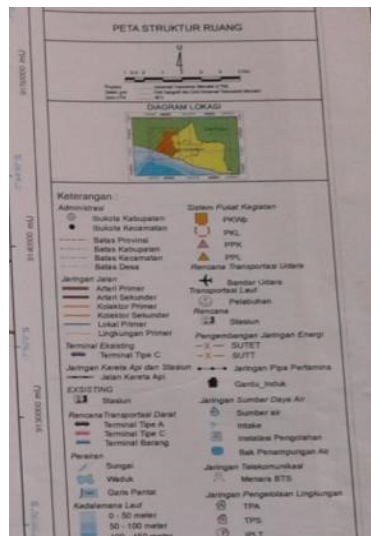
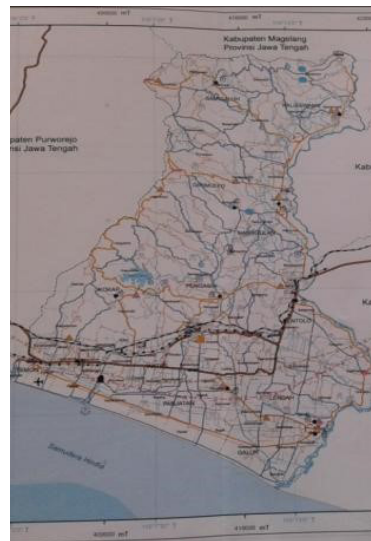


Figure 14. Improvements on national roads are located in Dusun Milir, Kedungsari Village, Pengasih Sub-District



Figure 15. The making of a park in Wates city centre



Figure 16. Construction of Progo Bridge in Sentolo Subdistrict that connects between Bantul, Sleman and Kulonprogo districts



Figure 17. Daendels Road southbound to the new candidate in Kulonprogo



The influence of the new airport on the infrastructure in Kulonprogo is very much, among others, the extension of the road to Kulonprogo Regency on the national road is located in Dusun Milir, Kedungsari Village, Pengasih District as shown in Figure 14 and the development of the park in Wates city center as shown in Figure 15, Sentolo subdistrict that connects between Bantul, Sleman and Kulonprogo districts as shown in Figure 16. Daendels Road south path towards the new candidate in Kulonprogo as shown in Figure 17. Figure 18. New Road to Sermo and Kalibiru Reservoir. Figure 19. The Housing Developers in Kulonprogo welcomed the New airport. In addition to the construction of roads and bridges, the construction of infrastructure that connects with the Borobudur Temple in Magelang Regency with the term Menor

Surgery involving the land acquisition of Kulonprogo residents as in Figure 20, many investors and housing developers who buy land in Kulonprogo to establish hotels and housing near the candidate new airport

Conclusion

The influence of NYIA on Kulonprogo infrastructure is massive, namely, the extension of national road to Kulonprogo Regency located in Milir Hamlet, Kedungsari Village, Pengasih Subdistrict, and bridge construction in Sentolo Subdistrict that connects between Bantul, Sleman and Kulonprogo districts. In addition to the construction of roads and bridges, the construction of infrastructure connects to Borobudur temple in Magelang regency under the term of Menoreh Surgery involving

Figure 18. New Road to Sermo and Kalibiru Reservoirs



Figure 19. The Housing Developers In Kulonprogo welcomed the new airport by buying land for residential business



Figure 20. New road to Magelang via Wates City



the land acquisition of Kulonprogo residents, investors and housing developers invest land in Kulonprogo to build hotel and housing near the new airport plan

The good synergy between PT. Angkasa Pura I, Kulonprogo Local Government, and the residents affected, evidenced by the acceleration of NYIA development expected to have human resources derived from the local people of Kulonprogo. The residents of the five affected villages received various facilities from Pemda Kulonprogo and PT. Angkasa Pura I among others is the provision of Ground Handling education scholarship to Kulonprogo residents at Sekolah Tinggi Kediargantaraan which will be placed at the new airport operated in 2020 and security training scholarship to fill the security job vacancy around the new airport in Kulonprogo

The obstacles in the relocation of affected residents of this airport are the construction of public facilities and social facilities such as the availability of clean water, electricity network and household sanitation at the beginning of development that is important to support the basic needs. The affected residents at Glagah Village, Palihan Temon Kulonprogo District refused to be relocated in case social facilities and public facilities are not available. The local government approach personally to the affected villagers by accelerating the relocation process and working with various stakeholders.

Acknowledgements

Acknowledgements to the Chairman of STTKD Yogyakarta Marsda TNI Purn. H. Udin Kurniadi, SE, MM, Mrs Vidyana Mandrawaty, SE, MM, Executive Chairman of STTKD Yogyakarta, Regent of Kulonprogo Local Government, Head of Manpower and Transmigration Office of Kulonprogo Regency and its staffs and to the residents impacted the new airport candidate, thanks for the cooperation.

Reference

Afwan, A.N. 2016. Public Perceptions and Potential of Business Reorientation Related to International Airport Development in Kulonprogo, *Jurnal Bumi Indonesia*, Vol.5, No.1

- Bappeda Provinsi DIY. 2017. http://bappeda.jogjaprov.go.id/jogja_masa_depan/detail/Pembangunan-Bandara-di-KulonProgo
- Disnakertrans. 2017. <http://nakertrans.kulonprogokab.go.id/>. Handover of Candidates for Students of STTKD 2017. 20 June 2017
- Insan, H. 2017. Pro Policy Planning of Kulonprogo Local People. Staff Bappeda Kulonprogo
- Kemhub. 2017. <http://www.solopos.com/2017/04/19/bandara-kulonprogo-pengurukan-lahan-relokasi>. 19 April 2017
- Naimul, F. 2015. Threats Negative Fronts Disclaimer of Wahana Tri Tunggal Community Against New Airport at Kulonprogo. *Skripsi Pendidikan Bahasa Dan Sastra Indonesia*
- Sabandar, S. 2014. Citizens Agreed because it is not directly impacted. *Daily Jogja*. Retrieved 16 August 2017 from <http://www.harianjogja.com/baca/2017/08/16>
- SorotKulonprogo. 2017. <http://sorotkulonprogo.com/berita-kulonprogo-4497-puluhan-warga-terdampak-nyia-ikuti-pendidikan-satpam-gratis>. 13 Juli 2017
- Wahyu, K. 2014. Vulnerable Groups in Airport Area Urban Development in Kulon Progo: A Case Study of New Yogyakarta International Airport (NYIA), *Jurnal Pemikiran Sosialogi*, Vol.4, No.1
- Yunita, P. 2016. Angkasa Pura 1 Strategy in Facing Community Rejection Against New International Airport Development Plan in Temon Sub-district Kulonprogo Regency, *Skripsi Fakultas Ilmu Sosial Humaniora*, UIN Kalijaga